



Disclaimer

These particulars, whilst believed to be accurate are set out as a general outline only for guidance and do not constitute any part of an offer or contract. Intending purchasers should not rely on them as statements or representation of fact, but must satisfy themselves by inspection or otherwise as to their accuracy. We have not carried out a detailed survey nor tested the services, appliances and specific fittings. Room sizes should not be relied upon for carpets and furnishings. The measurements given are approximate. No person in this firm's employment has the authority to make or give any representation or warranty in respect of the property.

Daniel Brewer

51 High Street
Great Dunmow
Essex, CM6 1AE

Telephone • 01371 856585
Website • www.danielbrewer.co.uk
E-mail • info@danielbrewer.co.uk

WATTS CLOSE, BARNSTON, DUNMOW, ESSEX, CM6 1LT

OFFERS OVER £325,000

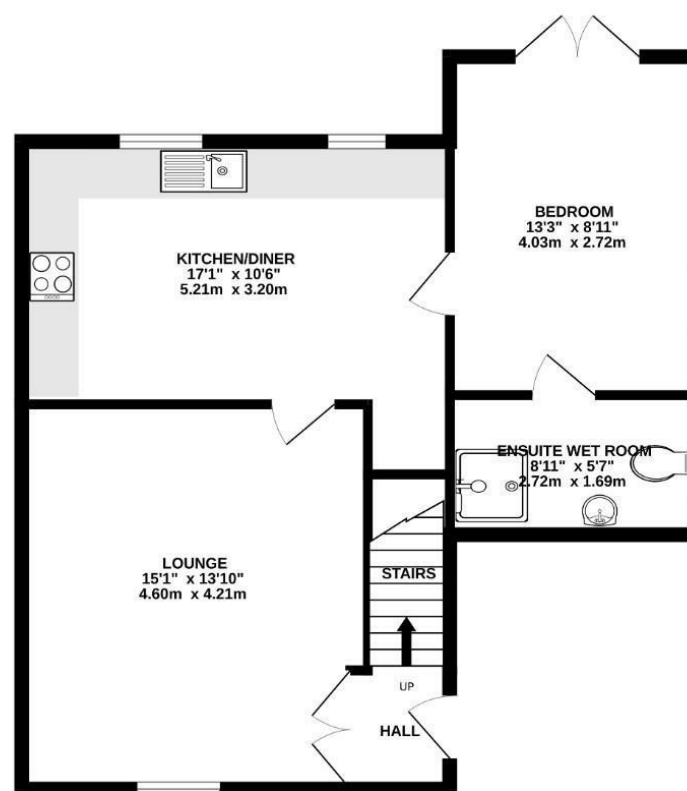


WATTS CLOSE
BARNSTON
DUNMOW
ESSEX
CM6 1LT

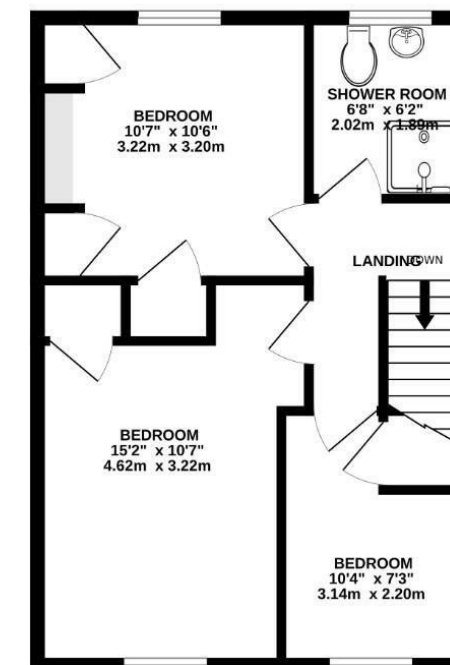


Located on a quiet residential road in the popular village of Barnston is this three/four bedroom semi-detached family home boasting a single garage with driveway parking. The ground floor accommodation comprises:- lounge, kitchen/breakfast room, family room/bedroom four, wet room & entrance hall. On the first floor are three bedrooms and a shower room. The property externally benefits from an enclosed rear garden.

GROUND FLOOR
627 sq.ft. (58.2 sq.m.) approx.



1ST FLOOR
438 sq.ft. (40.7 sq.m.) approx.



TOTAL FLOOR AREA : 1065 sq.ft. (98.9 sq.m.) approx.
Made with Metropix ©2026



- Three/Four Bedrooms
- Semi-Detached Family Home
- Single Garage With Driveway Parking
- Enclosed Rear Garden
- Lounge & Shower Room
- Kitchen/Dining Room
- Wet Room & Family Bathroom
- Viewing Advised
- Quiet Location
- No Onward Chain

Entrance Hall

With stairs rising to first floor landing, ceiling lighting, wall mounted radiator, power points, door to.

Lounge

15' x 13'7" (4.57m x 4.14m)

UPVC double glazed window front aspect, feature gas fired fireplace with brick surround, wall mounted radiator, T.V point, telephone point, power points, door to.

Kitchen/Breakfast Room

13'7" x 10'5" (4.14m x 3.18m)

UPVC double glazed window to rear aspect, comprising an array of eye and base level units with complimentary working surfaces over & tiled splashback, 1 ½ bowl stainless steel sink with drainer unit & mixer tap, free standing double electric oven with four ring hob and extractor fan above, plumbing for washing machine, plumbing for dishwasher, space for tumble dryer, space for fridge/freezer, inset spotlights, wall mounted radiator, wood effect flooring, power points, door to.

Family Room/Bedroom Four

UPVC double glazed French doors leading to the rear garden, wood effect flooring, radiator, power points, door to.

Wet Room

UPVC double glazed opaque window to side aspect, W.C, wash hand basin, walk-in shower, heated towel rail, fully tiled, inset spotlights, extractor fan,

First Floor Landing

Loft access, radiator, power points, doors to.





Principal Bedroom

12'9" x 9'6" (3.89m x 2.90m)

UPVC double glazed window to front aspect, door to airing cupboard, radiator, power points.

Bedroom Two

10'5" x 10'5" (3.18m x 3.18m)

UPVC double glazed window rear aspect, built-in storage cupboard, radiator, power points.

Bedroom Three

10'3" x 7'3" (3.12m x 2.21m)

UPVC double glazed windows to multiple aspects, radiator, power points, over stairs storage cupboard.

Shower Room

UPVC double glazed windows to multiple aspects, walk-in shower with glass enclosure, W.C, wash hand basin with pedestal, W.C, heated towel rail, fully tiled.

Single Garage With Driveway

To the rear of the property is a detached single garage with up & over door, window to side aspect, power and lighting. To the front of the garage is driveway parking and an additional parking space to the front of the property.

Enclosed Rear Garden

To the rear of the property is a porcelain patio area leading to the remainder of the artificial lawn, complemented by flower bed borders. Rear access is provided via a timber gate.

